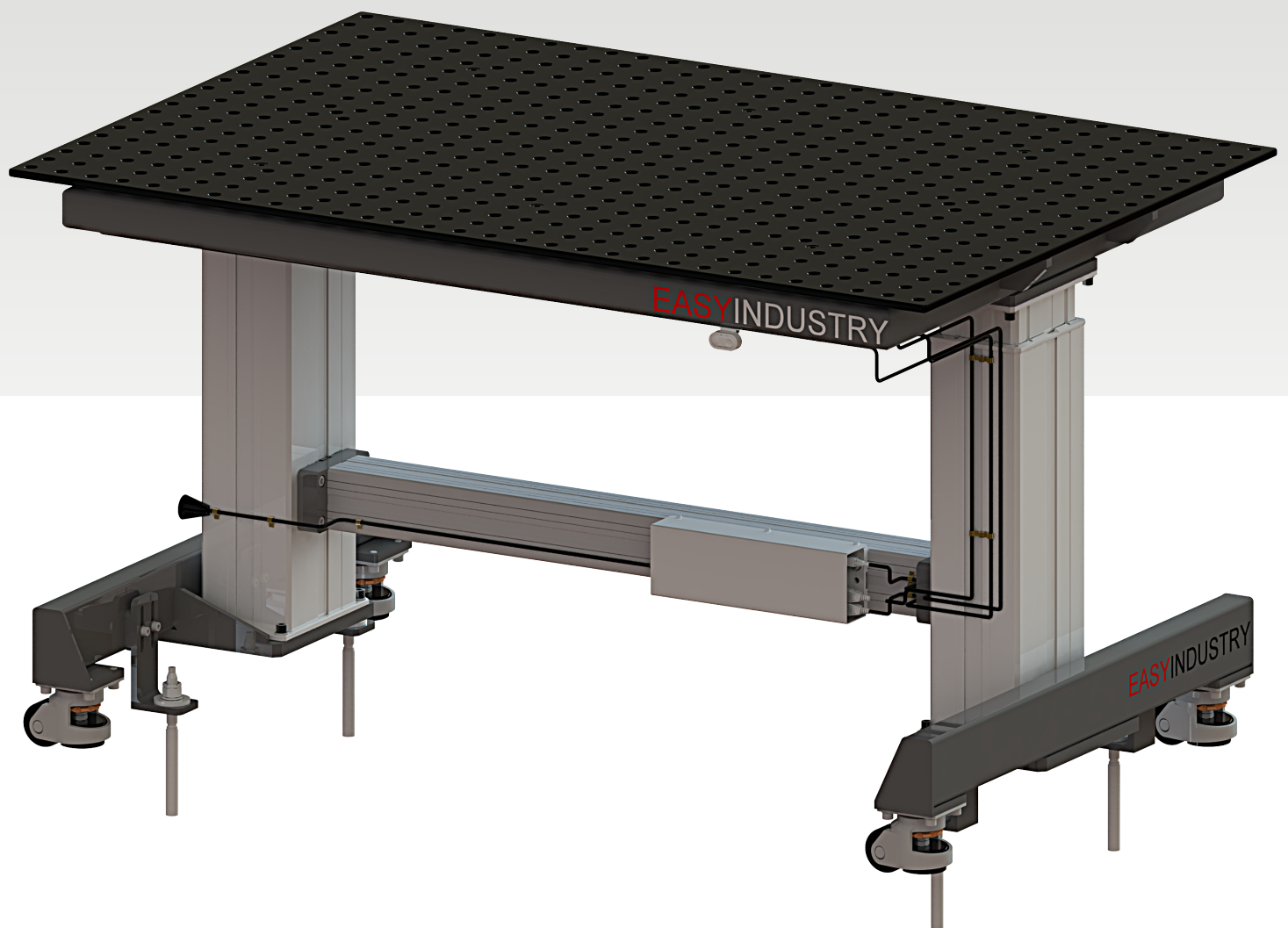


Elevation Table



EasyRobotics®
- we move your parts

Easy Weld

The Ultimate Ergonomic Welding Table

In the world of welding, precision and comfort are paramount. A height-adjustable welding table is not just a luxury; it is a necessity for ensuring optimal ergonomics and enhancing the quality of work. Welders often spend long hours at their stations, and the ability to adjust the height of the table can make a significant difference in their comfort and efficiency. Here's why an adjustable welding table is crucial:

Ergonomic Benefits

- Reduces Strain: Adjusting the table height helps minimize strain on the back, neck, and shoulders, preventing long-term health issues.
- Enhances Precision: Proper ergonomics allow welders to maintain a steady hand, resulting in more accurate and higher-quality welds.
- Increases Productivity: Comfortable working conditions can lead to increased focus and productivity, as welders can work longer without discomfort.

Safety and Efficiency

- Prevents Injuries: By allowing welders to maintain proper posture, an adjustable table reduces the risk of repetitive strain injuries.
- Optimizes Workflow: Adjusting the table to the ideal
- height for different tasks ensures that welders can work more efficiently and effectively.
 - Versatility: An adjustable table can accommodate various tasks and workpieces, making it a versatile addition to any workshop.

EasyTable Overview

EasyTable sets a new standard in ergonomic welding tables, combining advanced features with robust construction to deliver unparalleled performance. Whether you are a professional welder or a DIY enthusiast, EasyTable offers the flexibility and durability you need to achieve the best results.

1

Easy Weld table

comes with perforated plates available in 16 mm holes, making it a versatile addition to any workshop

Key Features of EasyTable

- Dimensions: 1500 mm (L) x 1000 mm (W) x 850 mm to 1350 mm (H)
- Overall Tabletop Size: 1500 mm (L) x 1000 mm (W) x 12-28 mm (H)
- Weight: 135 kg (excluding perforated plate)
- Maximum Load Capacity: 200 kg to 300 kg
- Application: Welding/assembly

Superior Welding Plate

The welding plate on EasyTable is the best in its class, constructed from through-hardened steel with a Plasma Nitride treatment. This double-hardened surface provides exceptional durability and longevity, making it ideal for heavy-duty welding tasks.

Perforated Plates and Versatility

- EasyTable comes with perforated plates available in 16 mm holes, making it a versatile addition to any workshop.
- Overall Tabletop Size: 2000 mm (L) x 1000 mm (W) x 16-28 mm (H)

Advanced Lifting System by Linak

EasyTable is equipped with dual column lifters from Linak, ensuring synchronized lifting for a stable and even surface. This advanced lifting mechanism provides smooth and precise height adjustments, enhancing both safety and convenience.

Height Adjustment for Ergonomic Comfort

EasyTable features a height adjustment range from 800 mm to 1300 mm, allowing you to customize the table height to suit your ergonomic needs. This flexibility ensures that you can work comfortably and efficiently, reducing the risk of strain and injury.

Easy to Install and Maintain

Designed with ease of use in mind, EasyTable is simple to install, maintain, and move thanks to its built-in wheels. This ensures that you can set up and reposition the table with minimal effort, maximizing your workflow efficiency.

Easy Assembly

Assembly table with built-in universal mount

Good for:

- Assembly
- Quality Control

EasyAssembly from EasyRobotics is a spacious Assembly cell, prepared for use in numerous applications in large series productions.

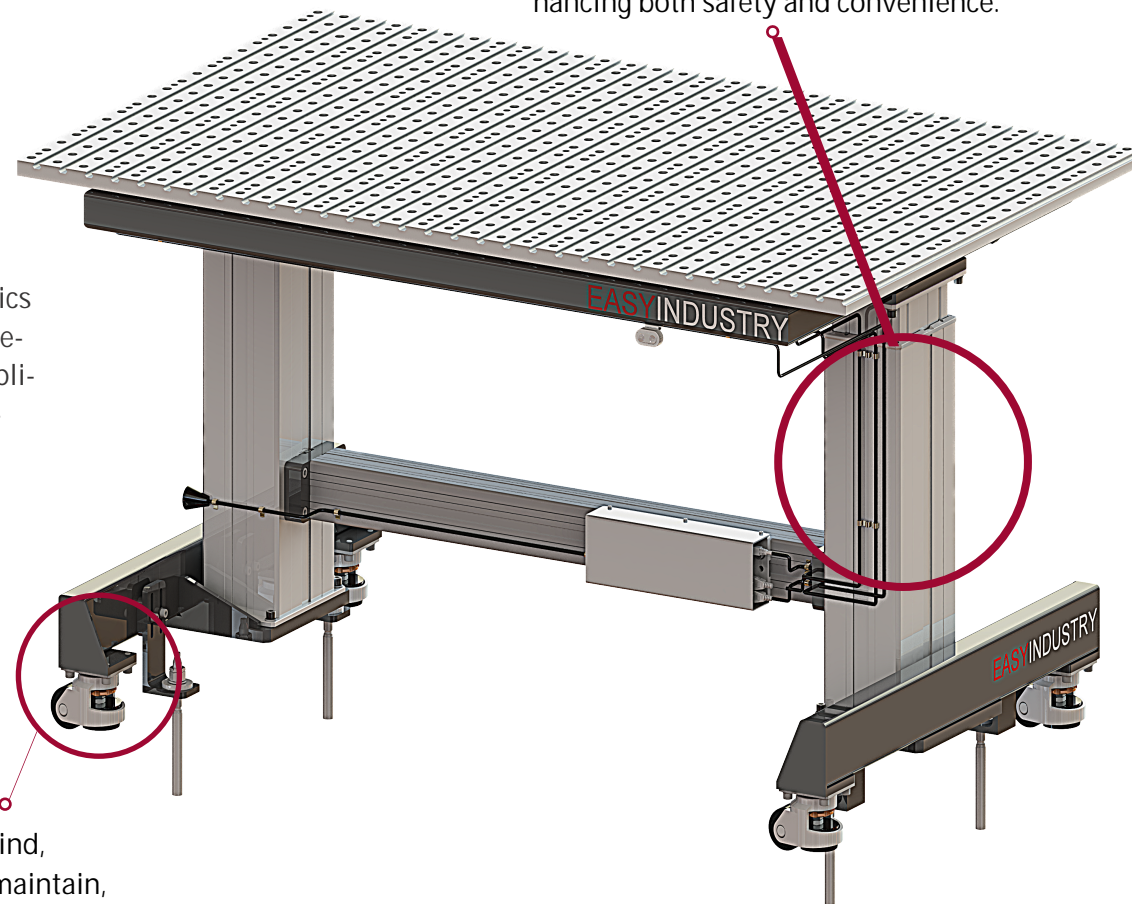
The wide tabletop 1600x1000mm is made of 24mm aluminum profile, which supports work with up to 200 - 300 kg. and provides versatility of use.

Easy to Install and Maintain

Designed with ease of use in mind, EasyTable is simple to install, maintain, and move thanks to its built-in wheels. This ensures that you can set up and reposition the table with minimal effort, maximizing your workflow efficiency.

Advanced Lifting System by Linak

Easy Assembly Table is equipped with dual column lifters from Linak, ensuring synchronized lifting for a stable and even surface. This advanced lifting mechanism provides smooth and precise height adjustments, enhancing both safety and convenience.



Key Features of Easy Assembly Table

- Dimensions: 1600 mm (L) x 1000 mm (W) x 850 mm to 1350 mm (H)
- Overall Tabletop Size: 1600 mm (L) x 1000 mm (W) x 24 mm (H)
- Weight: 135 kg (excluding perforated plate)
- Maximum Load Capacity: 200 kg to 300 kg
- Application: Assembly

2

Easy Assembly

Spacious table for mounting of all types of clamping equipment or parts for processing

Single Column Easy Welding

High-precision welding and assembly table with built-in universal mount Of single column lifter

Perfect size for welding

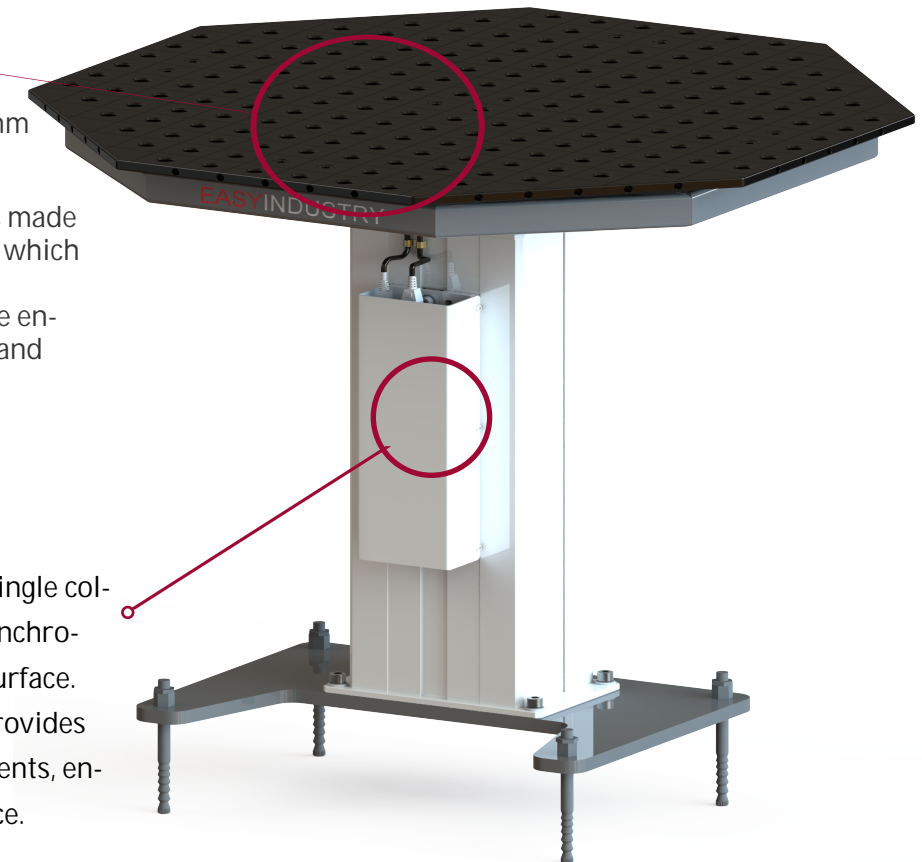
- Octagonal Welding Table With Plasma Nitration X 8.7, 800mm x 800mm x 12mm

High quality welding tabletop

- The tabletop of Easy Desk Welding is made of a high quality plasma nitrated steel, which guarantees long and reliable work.
- It has laser cut 16mm holes along the entire length, suitable for robust clamping and fixtures.

Advanced Lifting System by Linak

Easy weld Table is equipped with Single column lifters from Linak, ensuring synchronized lifting for a stable and even surface. This advanced lifting mechanism provides smooth and precise height adjustments, enhancing both safety and convenience.



Key Features of Single Column easy welding

- Dimensions: 800 mm (L) x 800 mm (W) x 850 mm to 1350 mm (H)
- Overall Tabletop Size: 800 mm (L) x 800 mm (W) x 12 mm -28mm (H)
- Weight: 50 kg (excluding perforated plate)
- Maximum Load Capacity: 100 kg to 150 kg
- Application: Welding/Assembly

3

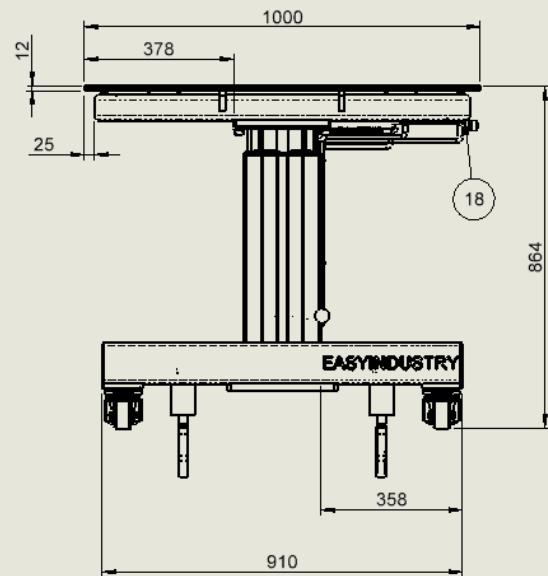
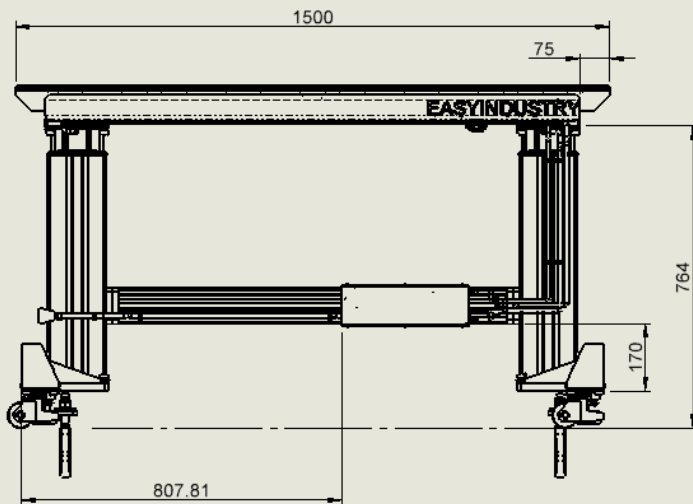
Single column Easy Welding

Plasma nitrated steel tabletop with laser cut 16mm holes for clamps and fixtures

FACTS

Steady, but flexible and mobile

Easy weld trolleys can be securely fixed to the floor with fasteners, but if you need to move it to a different location or place - you can easily do it with a wheels



Product order overview

ED-0106	EasyWeld	H: 850 mm -1350 mm, W: 1000 mm, L: 1500 mm, Wt: 190 kg, Base bracket, Grouting plate, Reinforced table, Standard Linak Column, Perforated plate 1500x100x12mm plasma nitrided
-	Easy Assembly	H: 850 mm - 1350 mm, W: 1000 mm, L: 1600mm, Wt: 200 kg, Base bracket, Grouting plate Reinforced table, Standard Linak Column, Aluminum table end profile
-	Single column Easy weld	H: 850 mm -1350mm, W: 800mm, L: 880mm, Wt: 100 kg, Base plate, Reinforced table, standard Linak column, octagonal Perforated plate 800x800x12mm plasma nitrided

Distributor

Danish manufacturer and supplier of robotic cells for all types of automation.

EasyRobotics®
- we move your parts

EasyRobotics ApS
Mommærkvej 5
DK-6400 Sønderborg
Phone: +45 31 25 06 02
info@easyrobotics.dk
www.easyrobotics.biz

