

# EASYDESK

## USER MANUAL



**EasyRobotics**®  
- we move your parts

---

**Table of content**

|   |                                 |    |
|---|---------------------------------|----|
| 1 | Introduction/intended use ..... | 2  |
| 2 | Safety notice .....             | 2  |
| 3 | Installation .....              | 3  |
| 4 | Adjustments .....               | 8  |
| 5 | Transport .....                 | 9  |
| 6 | Dimensions .....                | 10 |

*Information contained herein is the property of EasyRobotics ApS and shall not be reproduced in whole or in part without prior written approval of EasyRobotics ApS. The information herein is subject to change without notice and should not be construed as a commitment by EasyRobotics ApS. This manual is periodically reviewed and revised.*

*EasyRobotics ApS assumes no responsibility for any errors or omissions in this document.*

## 1 Introduction/intended use

EasyDesk is designed for easy feeding of CNC machines and other workplaces and machines. Can be mounted with a fully installed cobot or small-medium sized industrial robot..

## 2 Safety notice


### 2.1 Introduction

The intension of this manual is to give a guideline of mounting a cobot at the EasyDesk and this is not valid as a CE marking of the robot cell.


A risk assessment must be full filled after the full installation is concluded. Including the robot, gripper and other equipment and installations at the workspace.

EasyDesk must be bolted to the floor when performing working operation. The local governmental safety rules and legislation must be followed when installing and operating with a robot on the EasyDesk.


### 2.2 Legend

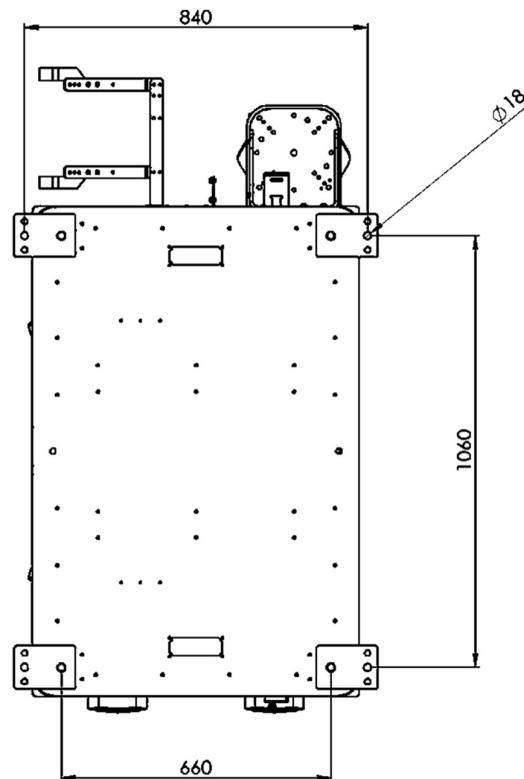
 This symbol means danger to life or risk of personal injury or damage to the equipment. Read carefully. Caution is required!

### 3 Installation

 The installation of the EasyDesk must be carried out only by trained, skilled personnel with the relevant profession. It is crucial to the safety and function of the machine, that it is properly aligned and securely anchored.

#### 3.1 Fix to floor

 Securely anchor the EasyDesk to the floor with floor-suitable anchor bolts.  
840x1060mm Ø18



### 3.2 Relocate bracket for the teach pendant on the EasyDesk

The T-Pad bracket can be mounted in two directions:

1. Parallel



2. Perpendicular



Relocate the T-Pad bracket so it fits the used brand.

### 3.3 Mounting the controller inside the EasyDesk



Release the locking pin, drag out the drawer and put the locking pin in the slot to fixate the drawer. Place the controller on the drawer and the cables in the energy chain. Release the locking pin and place the drawer back into the EasyDesk.

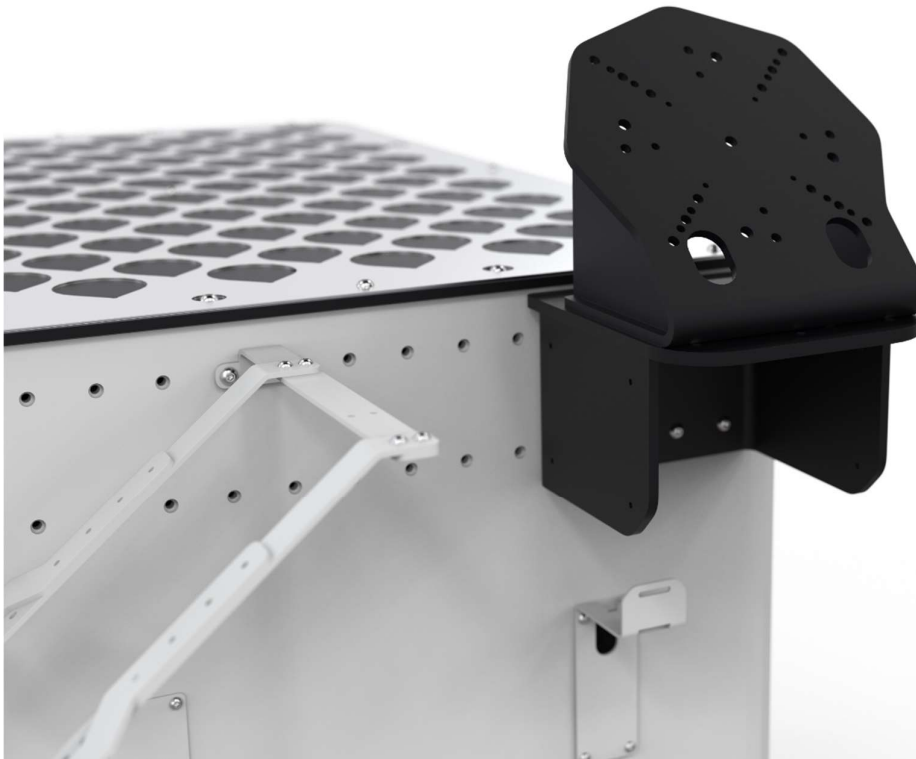
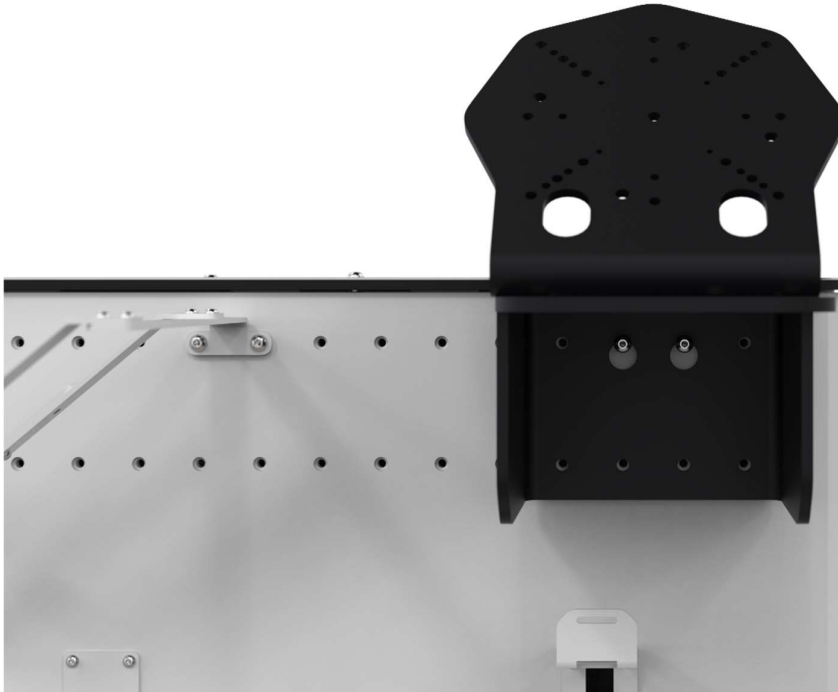


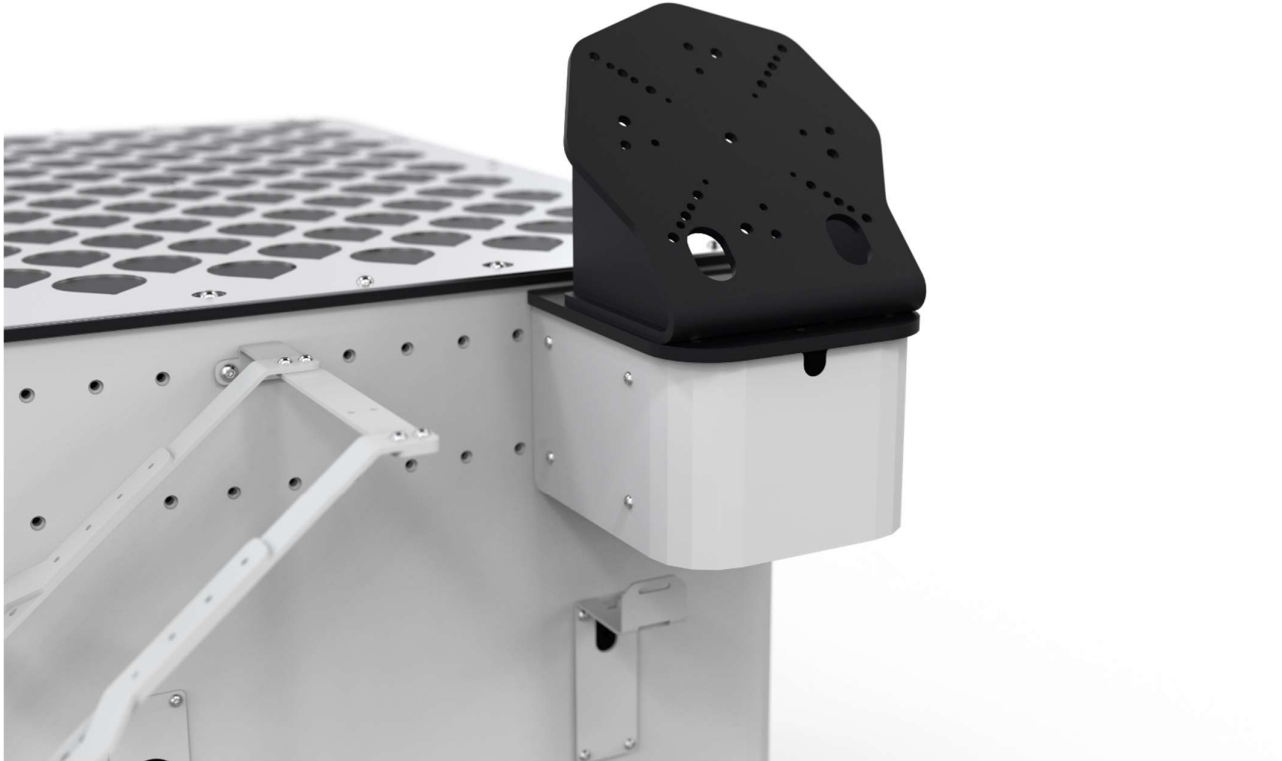
### 3.4 Mounting the robot console



*Follow the mounting guidelines of the robot manual.*

Mount the robot console in the right position. Start by mounting 2x M8x20 in the top-middle and leave a gap if 10mm. This will allow the robot console to slide into position due to the two keyhole-shaped holes. Fasten all 8x M8x20.





Mount the shroud and ensure that the cable goes into the cable hole.



## 4 Adjustments

### 4.1 Adjusting the feet

Loosen the lock nut, adjust the foot by turning, retighten the lock nut.

The feet should be adjusted so:

- The EasyDesk stands stable without rocking, use a bubble level.



## 5 Transport

### 5.1 Fixation for transport

Ensure that the locking pin is insert during transport to prevent any undesirable extension.



## 6 Dimensions

