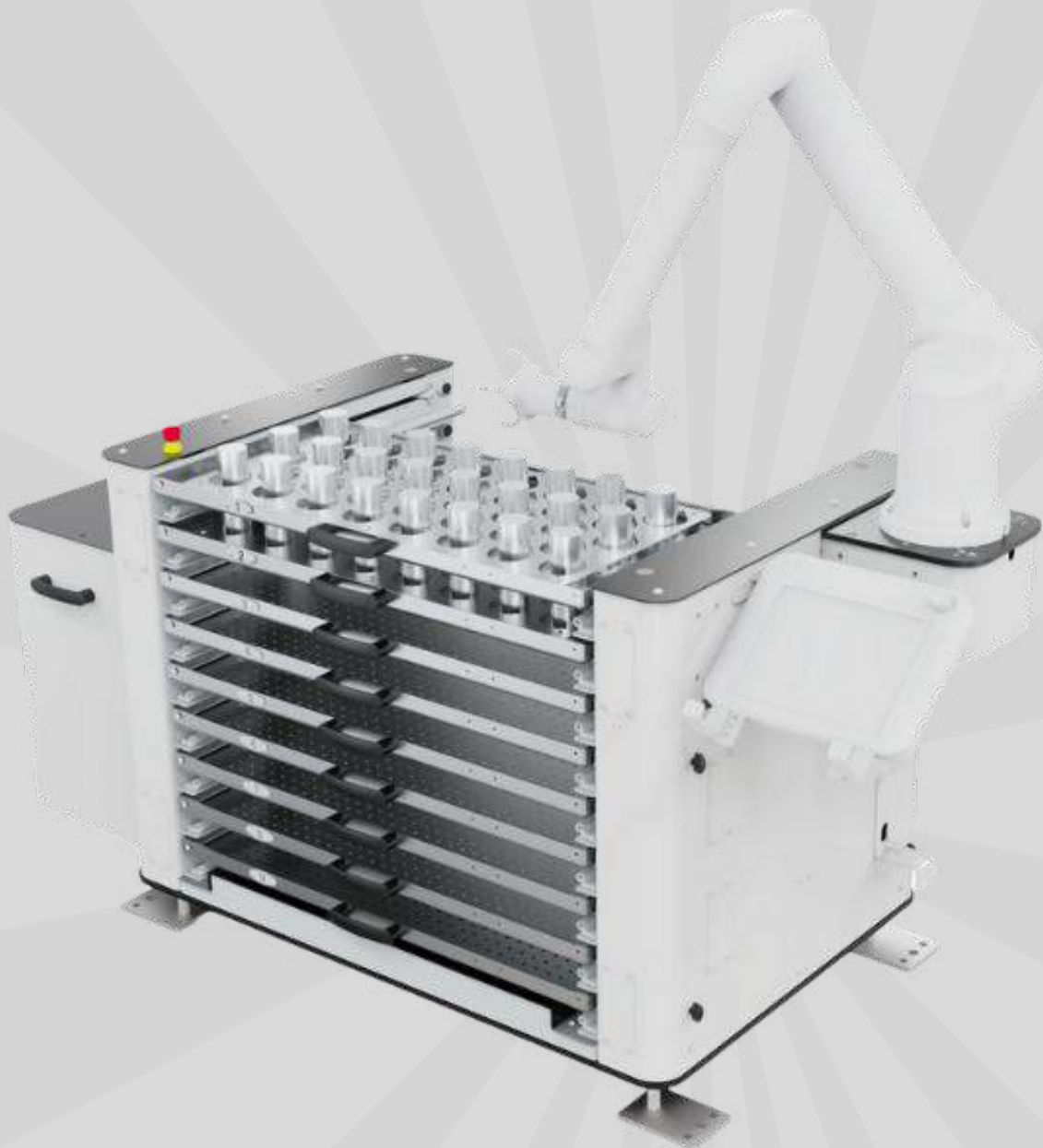


ProFeeder S

Robust and cost effective robot cell



Introduction

The ProFeeder S is a compact robot cell and CNC machine feeder designed for efficient machine tending and robotic parts handling. Robust, cost-effective, and versatile, it offers up to nine trays, each capable of holding up to 150 kg, secured with mechanical magnetic locks for reliable throughput. Its plug-and-play design streamlines production while maintaining consistent performance.

The ProFeeder S mobile robot workstation features reversible cobot mounting, integrated cable management, and both internal and optional external controller compartments. Despite its solid construction, the ProFeeder S is highly mobile, easily relocated via forklift across production lines. This makes it an ideal flexible robot feeder for manufacturers seeking a durable, adaptable, and productivity-enhancing automation solution.

ProFeeder Flex Advantages

Flexible Mounting Options

The cobot can be mounted on either the left or right side of the ProFeeder S robot feeder, with both sides featuring convenient cable holes and plugs for clean cable management in the compact robot cell.

Integrated Internal Compartment

The bottom side includes an internal compartment designed to securely house small or medium-sized robot controllers in a horizontal "lay-down" position, supporting efficient collaborative robot tending.

Support for Larger Controllers

For bigger controllers, an external compartment can be mounted on either side of the ProFeeder S mobile robot workstation, providing adaptable installation and easy accessibility for CNC machine feeder applications.

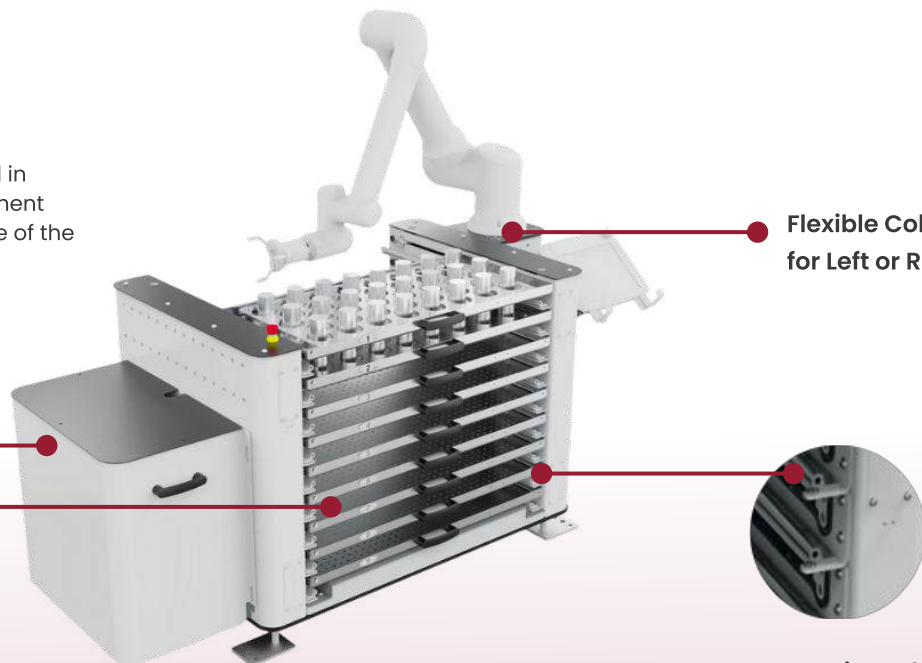
Controller Compartment

The controller can be placed in external controller compartment (mounted on left or right side of the robot cell).

Flexible Cobot Mount for Left or Right Side

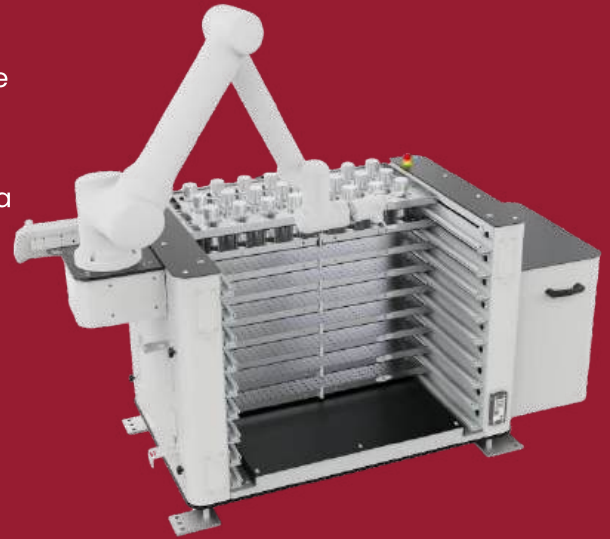
Tray Capacity up to 150kg per tray

Magnetic Lock



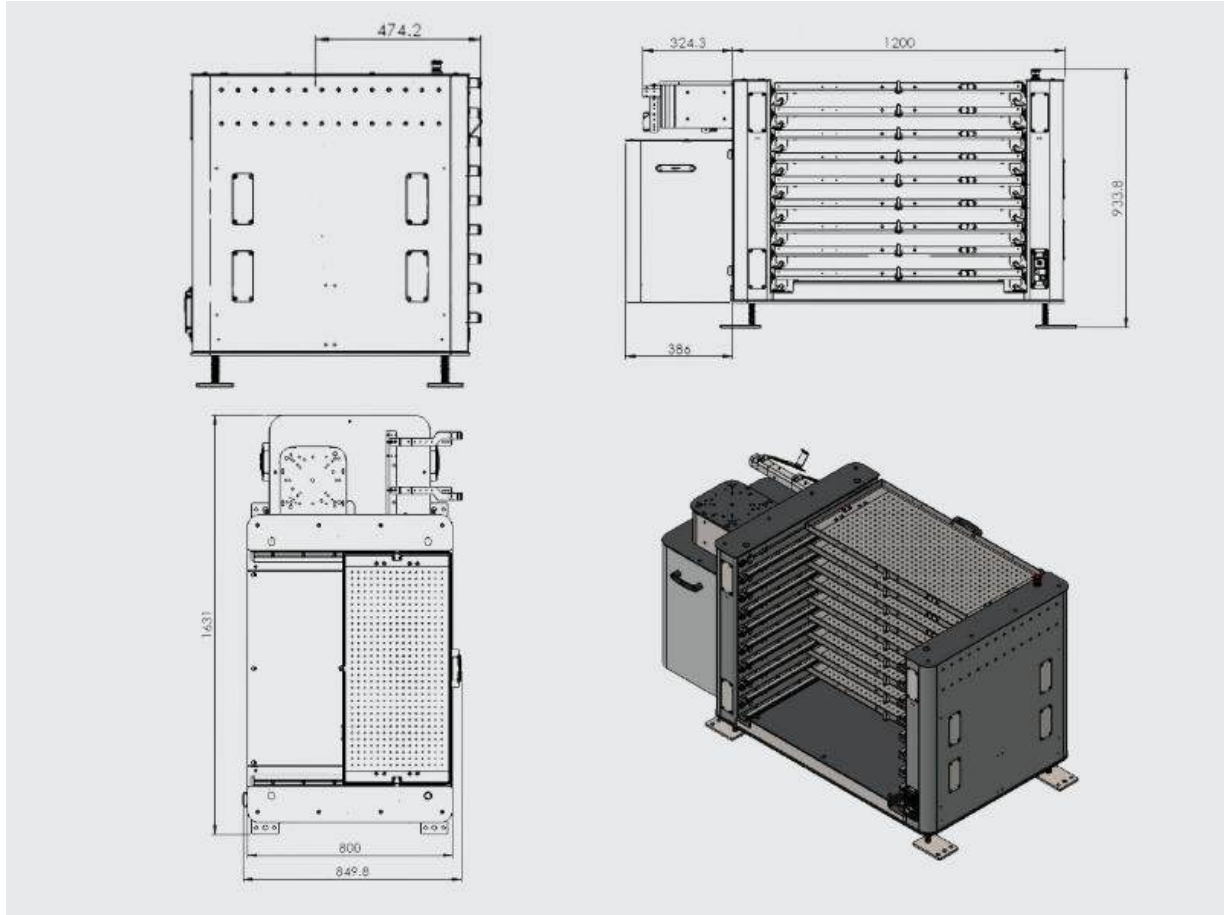
ProFeeder S Overview

- Despite a solid build and 1.4 m width, the ProFeeder S mobile robot workstation is engineered for mobility and quick repositioning.
- A single operator can relocate the compact robot cell with a standard forklift—no extra labor or complexity.
- Deploy across multiple positions or production lines within the same day to maximize utilization.
- Adapts to changing workflows and production demands; ideal for dynamic CNC machine tending and flexible collaborative robot feeder applications.
- Robust, cost-effective, capacious, and simple robot feeder system—suited to almost any production scale.



ProFeeder S CNC Automation

- Contains up to 9 trays
- Integrated or attachable controller compartment
- Easily movable by forklift
- Flexible cobot mounting and cable management
- Compact dimensions — H1006 × W1412 × L920 mm



Product Order Overview

PFS-1000-03	ProFeeder S 3x 100kg tray	H: 900 mm, W: 933, L: 1600, Wt: 320 kg, 3x 800x400mm tray area, 100kg pr tray, max part height 150mm
PFS-1000-05	ProFeeder S 5x 100kg tray	H: 900 mm, W: 933, L: 1600, Wt: 360 kg, 5x 800x400mm tray area, 100kg pr tray, max part height 70mm
PFS-1000-09	ProFeeder S 9x 100kg tray	H: 900 mm, W: 933, L: 1600, Wt: 410 kg, 9x 800x400mm tray area, 100kg pr tray, max part height 70mm

EasyRobotics®

- we move your parts

EasyRobotics ApS

Tinggårdvej 1,

6400 Sønderborg, Denmark

E-Mail: info@easyrobotics.dk

Phone: +45 53770267

Web: www.easyrobotics.biz